

VALBY®

®



Grapples for Mini-Excavators

Quick Couplers

Rigid Mount



SG31HD with John Deere Wedge Coupler Rigid Mount

The utility of a mini-excavator can be expanded to log loading, landscaping and land clearing with the use of quick couplers and appropriate grapple. Our quick coupler grapple combinations can be attached to any machine with an available quick coupler system.

Hanging Mount



GR50 with John Deere Wedge Coupler Hanging Mount

If your excavator has a Quick Attach, we can fabricate a flat plate coupler to fit. This way, you can change your grapple and bucket with ease. We would need to know the Make/Model of Quick Attach, and whether it is a "Pin-on" (manual pin) or a "Pin-grabber" (hydraulic pin) Quick Attach.

Rigid rotators must be installed on a flat plate coupler in order to extend the grapple horizontally. A grapple/rotator system requires two full hydraulic circuits to provide rotation and clamping functions.



If your excavator does not have two circuits, we can still provide you with a working system. You would simply need a diverter valve that allows you to split one circuit into two functions. The diverter valve installs on the side of a flat plate coupler or directly to the boom, and operates via a wire harness from the valve to the cab, with a foot-operated tap switch.



VALBY®



Grapples for Mini-Excavators

Available with several different types of Grapples and Rotators to suit your needs!

Log Grapples

The Valby bypass grapples have excellent geometry. The form of the claws enables a smooth roll in of the stems and a tight close.

They have large powerful cylinders and a belly plate that protects the cylinder from underneath. The Valby grapple has a modern bypass design with double connection rods which provide good balance and less stress.



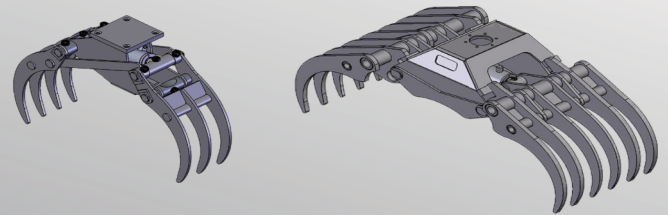
Universal Grapples

These grapples have a two prong jaw on one side and a single prong jaw in the other. The form of the jaw is such that when open the grab will penetrate well into piles of brush, scrap material, pulpwood, and construction debris. They also work well for handling logs. The grapples open to 31" and 41" respectively. These grapples are typically used by landscapers, land clearing crews and scrap yards.



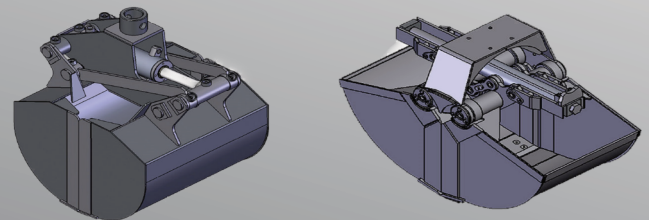
Sorting Grapples

The Valby Sorting/Waste Grapples utilize several tines/fingers to grab materials like stone, brush, scrap, debris and Forest residue. these range in size from 27" up to 90". These grapples still utilize the bypass design for maximum use of the grapple's from little to big grabs of material



Clamshell Bucket's

The clamshell buckets have double-equalizer linkage, which distributes the load evenly during the closing of the grapple. A heavy duty clamshell bucket with a high penetrating force, and a heavily reinforced body. The cutting edges on the bucket are made of .63" (16mm) boron steel. The jaws are sharpened for easy penetration, and close up tight. It also comes with enlarged, sealed bushings, and a built in pressure reduction valve.



888-589-6160

www.northeastimplement.com

460 Halsey Valley Rd.
Spencer, NY 14883